



# The Shrimp e-Advocate

The Southern Shrimp Alliance (SSA) is a non-profit alliance of members of the U.S. shrimp industry in eight states committed to preventing the continued deterioration of America's shrimp industry and to ensuring the industry's future viability. SSA serves as the national voice for the shrimp fishermen and processors in Alabama, Florida, Georgia, Louisiana, Mississippi, North Carolina, South Carolina, and Texas.

## Quick Links

[SSA Website](#)

### Board of Directors

#### North Carolina:

Nancy Edens  
[keywestnative57@yahoo.com](mailto:keywestnative57@yahoo.com)

PD Mason  
[cmason5@ec.rr.com](mailto:cmason5@ec.rr.com)

#### South Carolina:

Clay Cable  
[claycable@aol.com](mailto:claycable@aol.com)

Wayne Magwood  
[tressymellichamp@att.net](mailto:tressymellichamp@att.net)

#### Georgia:

Elaine Knight

## FYI

Dear NOAA Fisheries Stakeholders and Constituents,

Several key announcements in relation to the BP oil spill in the Gulf were made today. Announcements are attached and briefly summarized below along with links to additional information.

1) \_Modification\_: Another modification to the fishing closure in the Gulf has been issued - with 93 percent remaining open for fishing, and supporting productive fisheries and tourism. Changes take effect at 6:00 p.m. EST today. For full information of this latest modification, see attached announcement and map, or go to <http://sero.nmfs.noaa.gov>.

2) \_Routine Process and Notification\_: NOAA has also established a process to expedite changes to the areas closed to fishing in the Gulf. Beginning today, area boundaries could be modified daily, based on where and how fast the oil spill is moving. NOAA will provide any daily updates at <http://sero.nmfs.noaa.gov> by 12:00 p.m. EST. Any changes to the closed area will become effective at 6 p.m. EST the same day. The six-hour window is meant to give fishermen time to retrieve their gear from any areas that are about to close, and advance notice of areas that will soon open for fishing. This message will also be available on NOAA Weather Radio and by calling NOAA Fisheries southeast regional

[kseafood@bellsouth.net](mailto:kseafood@bellsouth.net)

Mike Dubberly  
[daddysboy1775@aol.com](mailto:daddysboy1775@aol.com)

Mississippi:

Steve Bosarge  
[stevebosarge@hotmail.com](mailto:stevebosarge@hotmail.com)

Tommy Schultz  
[Revahopkins@bellsouth.net](mailto:Revahopkins@bellsouth.net)

Florida:

Chris Gala  
[tricocg@aol.com](mailto:tricocg@aol.com)

Sal Versaggi  
[sal@versaggi-shrimp.com](mailto:sal@versaggi-shrimp.com)

Alabama:

Rosa Zirlott

[BrentRosa@aol.com](mailto:BrentRosa@aol.com)

Mickey Johnson  
[jbuiltinc@aol.com](mailto:jbuiltinc@aol.com)

Louisiana:

Cathy Blanchard  
[madamecheverette@myviscom.com](mailto:madamecheverette@myviscom.com)

James Blanchard

[cherib1961@gmail.com](mailto:cherib1961@gmail.com)

Texas:

Wilma Anderson  
[texasshrimp@clearwire.net](mailto:texasshrimp@clearwire.net)

Craig Wallis  
[Wallis.shrimp@yahoo.com](mailto:Wallis.shrimp@yahoo.com)

---

**Executive Director**

John Williams  
[John@shrimpalliance.com](mailto:John@shrimpalliance.com)

office at 727-824-5305. NOAA Fisheries suggests you check this page routinely. A copy of the rule and related materials are posted at <http://sero.nmfs.noaa.gov>.

3) Rapid-Response Contamination Testing: NOAA has also dispatched Director of the Northeast Fisheries Science Center, Dr. Nancy Thompson, to lead a rapid-response contamination testing system at NOAA's Southeast Fisheries Science Center lab in Pascagoula, Miss. The rapid-response testing involves chemical analysis of water samples, and chemical and sensory analysis of fish and shellfish. For more details, see attached announcement or visit [www.noaa.gov](http://www.noaa.gov).

Regards,  
Laurel Bryant

Other Daily Oil Spill Updates:  
[www.noaa.gov](http://www.noaa.gov)  
<http://www.deepwaterhorizonresponse.com/go/site/2931/>

**FYI**



Contact: Kim Amendola,  
727-403-6533  
Shelley Dawicki, 727-551-5754

FOR IMMEDIATE RELEASE  
May 11, 2010

NOAA Modifies Fishing Closed Areas in Gulf; 93 Percent Remains Open  
Designs New Process to Improve Timeliness of Closure Information  
NOAA's Fisheries Service has modified the area closed to fishing in the  
of Mexico due to the BP oil spill, which will include federal waters seaward  
Louisiana state waters in the vicinity of Timbalier Island to waters off

**Director of Field Operations**

**Richard Vendetti**  
[vendetti@shrimpalliance.com](mailto:vendetti@shrimpalliance.com)

**Executive Assistant**

**Rachel Williams**  
[rachel@shrimpalliance.com](mailto:rachel@shrimpalliance.com)

**Office Clerk**

**Meghan Yopp**  
[meghan@shrimpalliance.com](mailto:meghan@shrimpalliance.com)

Florida's Choctawhatchee Bay.

These changes will leave more than 93 percent of the Gulf's federal waters open for fishing, and supporting productive fisheries and tourism. The changes will take effect at 6:00 p.m. EDT today.

NOAA also will expedite updates to the areas closed to fishing in the Gulf of Mexico, as well as public notice of those changes. The closure process is being improved to cut down on the red tape necessary to modify the boundaries of the closure area. And beginning today, area boundaries could be modified daily, based on where and how fast the oil spill is moving.

NOAA will provide daily updates at <http://sero.nmfs.noaa.gov> by 12:00 p.m. EDT. Any changes to the closed area will become effective at 6:00 p.m. the same day. The six-hour window is meant to give fishermen time to retrieve their gear from any areas that are about to close, and advance notice of areas that will soon open for fishing. A status message will be updated daily, even when closed area has not changed. This message will also be available on NOAA Weather Radio and by calling NOAA Fisheries southeast regional office at 727-824-5305.

"We've met with Gulf fishermen over the last few weeks and understand they need to receive rapid information," said Eric Schwaab, NOAA assistant administrator for NOAA's Fisheries Service. "NOAA stands shoulder to shoulder with Gulf coast fishermen and their families during these challenging times. Providing frequent updates about closed areas will allow fishermen to make good business and recreational decisions throughout the oil spill event, and will maintain public confidence in seafood from the Gulf of Mexico."

Changes to the area closed to all fishing will be based on the present location and trajectories of the oil spill, which are affected by wind speed and direction, currents, waves, and other weather patterns. Adjustments will be made into account fisher and consumer safety, while keeping open those areas not affected by the oil spill.

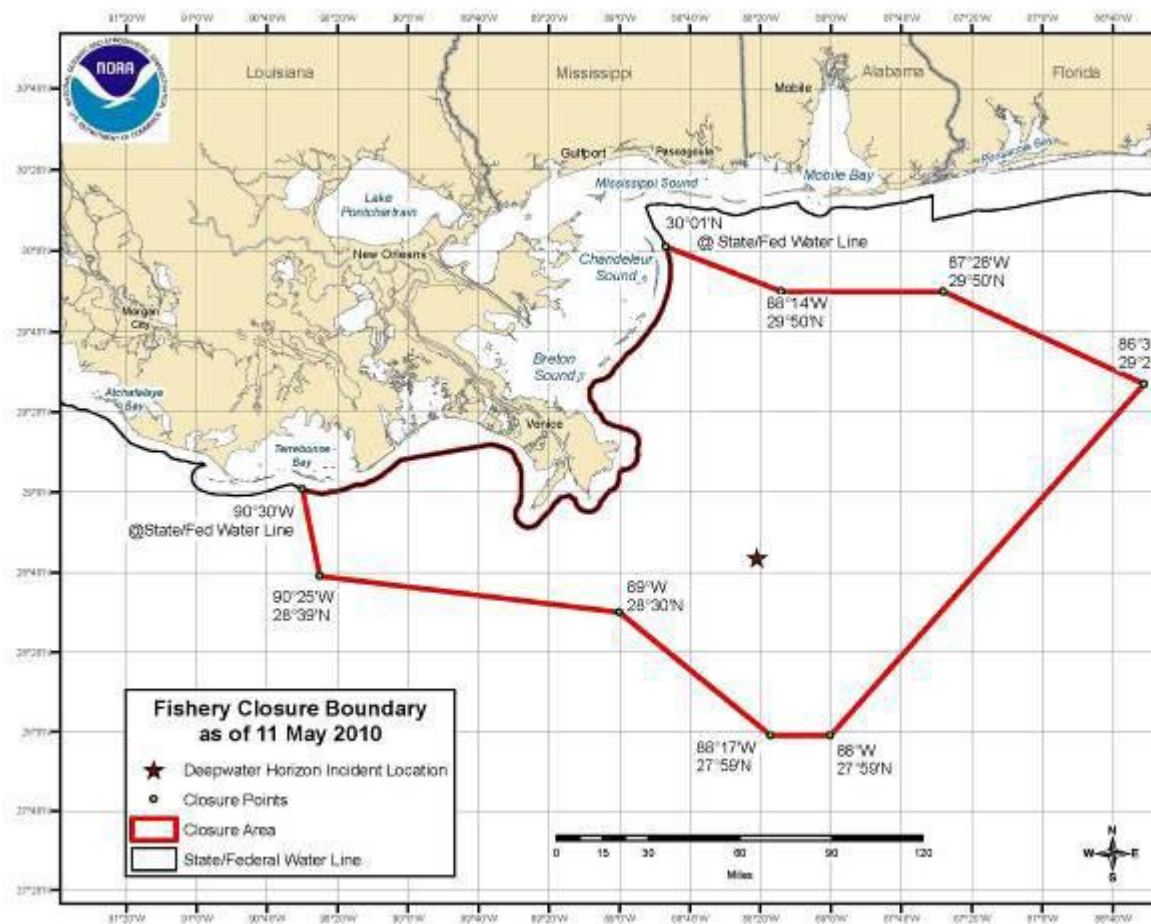
"Our plan is to use this new expedited process to open fisheries as well as Roy Crabtree, NOAA's Fisheries Service southeast regional administrator. When an area no longer exhibits oil and we determine through analysis that fish and shellfish are safe to eat, we will re-open that area to commercial and recreational fisheries."

In the meantime, NOAA strongly advises fishermen not to fish in areas

oil or oil sheens are present, even if they are outside the closed area.

Fishermen interested in being hired by BP to help clean up from the spill or to deploy boom in the Gulf of Mexico should call 281-355-5511. Fishermen who wish to contact BP about a claim should call 800-440-0858.

NOAA's mission is to understand and predict changes in the Earth's environment, from the depths of the ocean to the surface of the sun, and to conserve and manage our coastal and marine resources. Visit us at <http://www.noaa.gov> or on Facebook at <http://www.facebook.com/usnoaagov>.



Contact: Christine Patrick  
301-713-2370

FOR IMMEDIATE RELEASE  
May 11, 2010

## **NOAA Dispatches Northeast Science Chief to Lead Rapid-Response Contamination Testing System**

NOAA is sending one of its top fisheries science directors to the Gulf to lead its effort to rapidly assess, test and report findings about risks posed in the Gulf of Mexico by contaminants from the BP oil spill and clean-up.

Nancy Thompson, Ph.D, director of NOAA's Northeast Fisheries Science Center (NEFSC), will head to Pascagoula, Miss., to lead NOAA's response team. She will work closely with Bonnie Ponwith, Ph.D., director at the agency's Southeast Fisheries Science Center, who is leading an intensified effort to monitor the spill's effects on important species in the Gulf of Mexico.

"From her experience working on contaminant testing after Hurricanes Katrina and Rita, Nancy understands the science and knows the Gulf region," said E. Schwaab, NOAA assistant administrator for NOAA's Fisheries Service. "Her leadership in running our contaminant testing system is an important step in ensuring NOAA can continue efforts related to fisheries management in the Gulf."

Thompson's arrival will allow Ponwith to focus on both her oil spill duties and high-priority regional issues in fisheries management, including leading assessments for red snapper stocks and working with the Gulf, Caribbean and South Atlantic fishery management councils.

The rapid-response testing involves chemical analysis of water samples and chemical and sensory analysis of fish and shellfish. These will be compared to samples taken immediately following the spill and after Hurricanes Katrina and Rita. Scientists will also compare actual or projected locations of contaminants with normal locations of fish in the Gulf. Scientists at the Pascagoula lab, lab director Lisa Desfosse, Ph.D., will support efforts by continuing aerial surveys to monitor the location of marine mammals and sea turtles and by collecting shellfish samples for contaminant analysis.

NOAA will use test results and analysis in making decisions about where fishing should be curtailed in the region affected by the BP oil spill, and whether seafood is safe for consumption. The NOAA system will be coordinated with other agencies active in the response, including the Food and Drug Administration and the Environmental Protection Agency.

During Thompson's temporary absence, deputy Frank Almeida will act as the acting director of the NEFSC and will continue work on critical groundfish issues in that capacity. "NOAA has a deep bench that is flexible and can work together as a team to handle both the oil spill response and our normal operations in the region," said Steve Murawski, Ph.D., chief science advisor for NOAA Fisheries. "Frank Almeida and Nancy are some of our most respected scientists, and will handle the challenges ably."

NOAA understands and predicts changes in the Earth's environment, from the depths of the ocean to the surface of the sun, and conserves and manages our coastal and marine resources. Visit us on Facebook at <http://www.facebook.com/noaa.lubchenco>.

[Forward email](#)