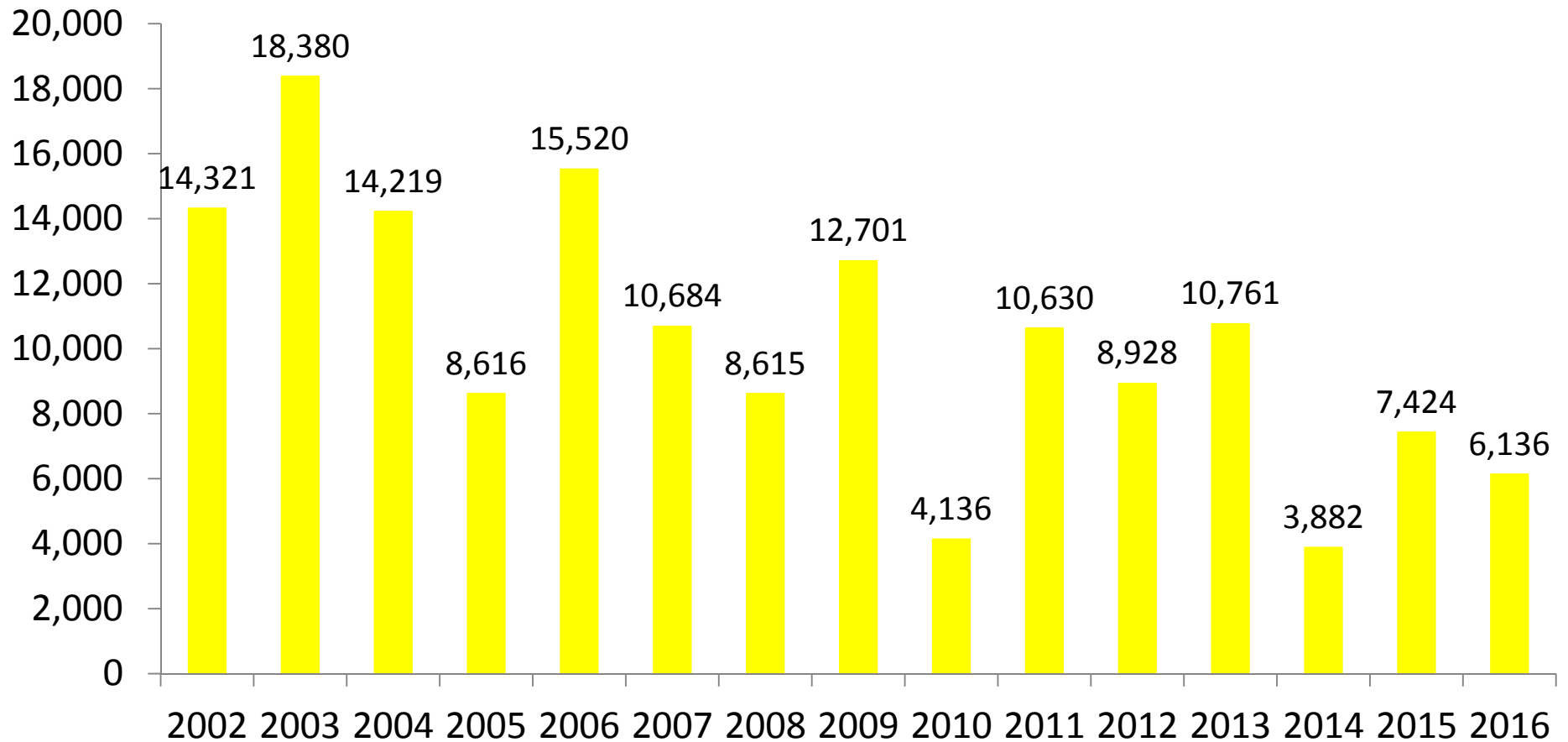


May Landings in Louisiana Were 42.8% Below Historical Averages



Louisiana Landings, May 2002-2016 (thousands of pounds, HLSO-weight)

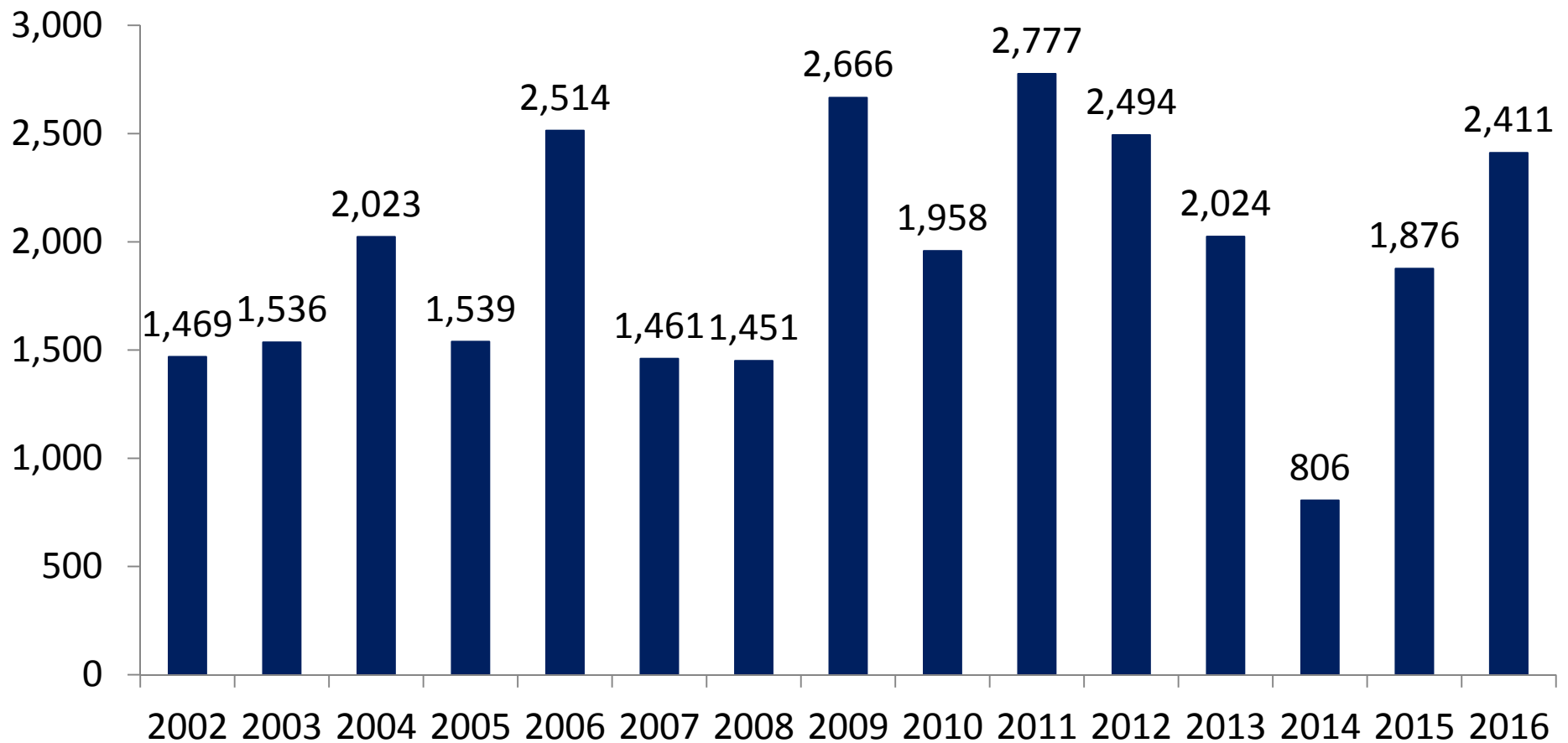


May average for the 2002-2015 period = 10,629,821 pounds

May Landings in Texas Were 26.9% Above Historical Averages



Texas Landings, May 2002-2016 (thousands of pounds, HLSO-weight)

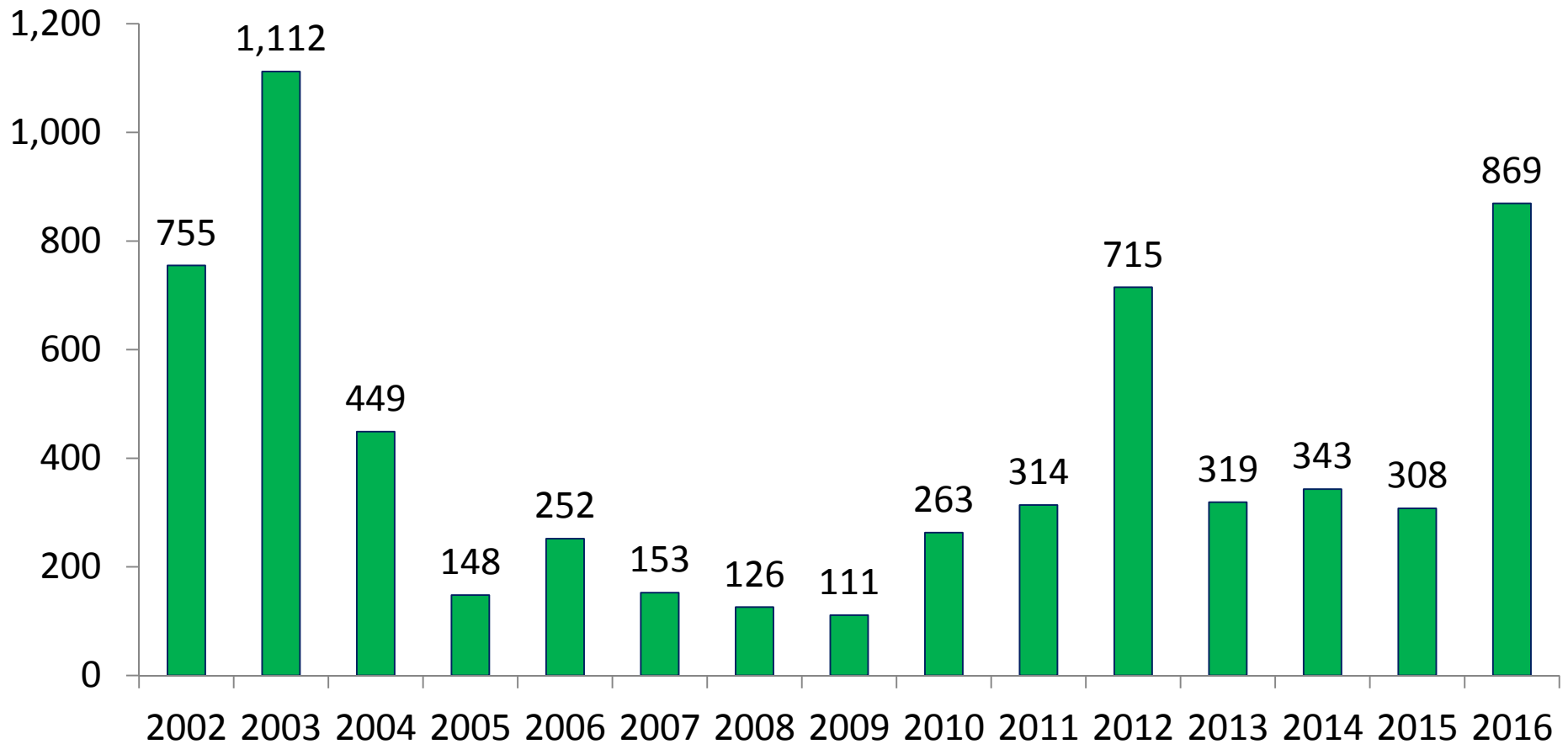


May average for the 2002-2015 period = 1,899,521 pounds

May Landings in Alabama Were 126.8% Above Historical Averages



Alabama Landings, May 2002-2016 (thousands of pounds, HLSO-weight)

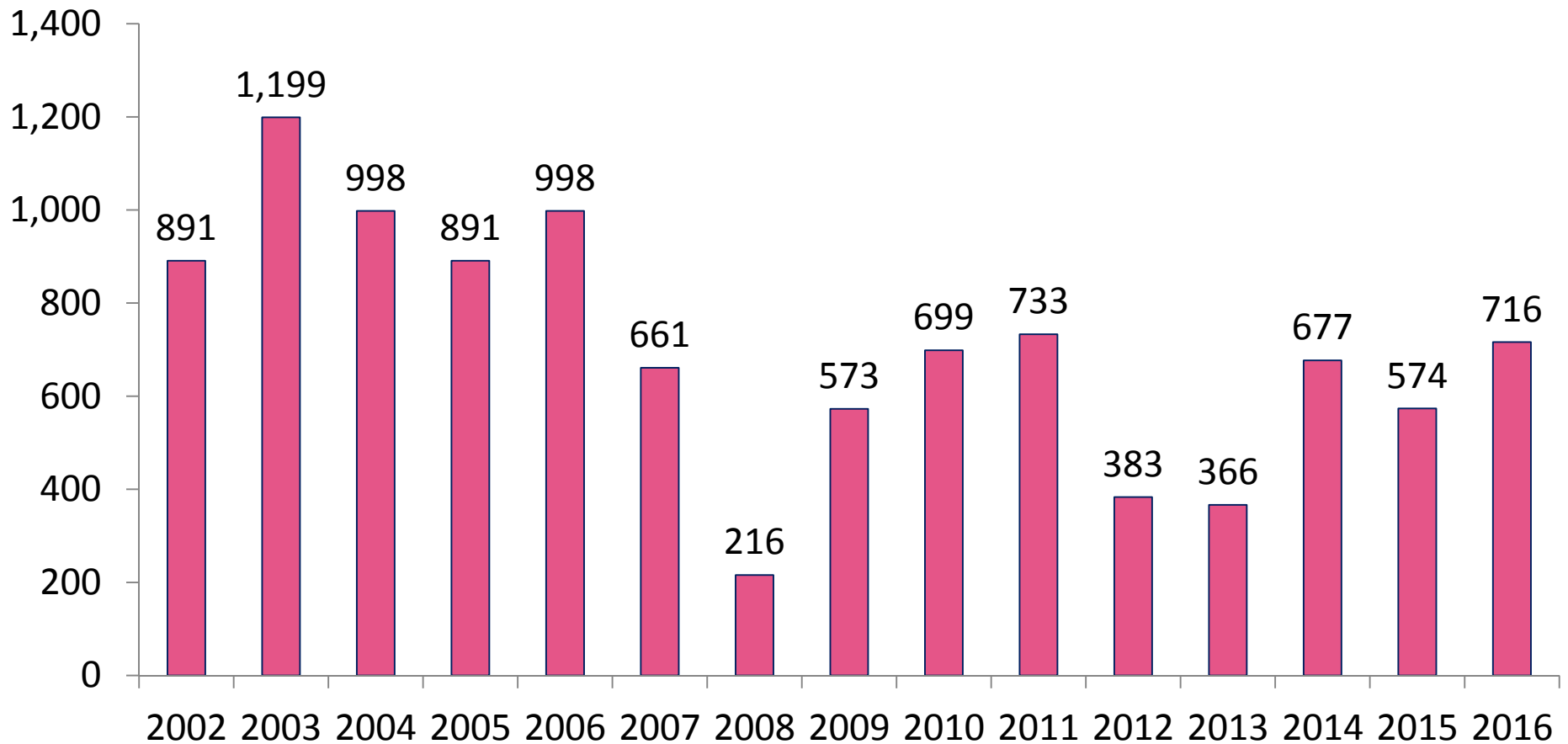


May average for the 2002-2015 period = 383,379 pounds

May Landings on the West Coast of Florida Were 1.7% Above Historical Averages



West Coast of Florida Landings, May 2002-2016 (thousands of pounds, HLSO-weight)

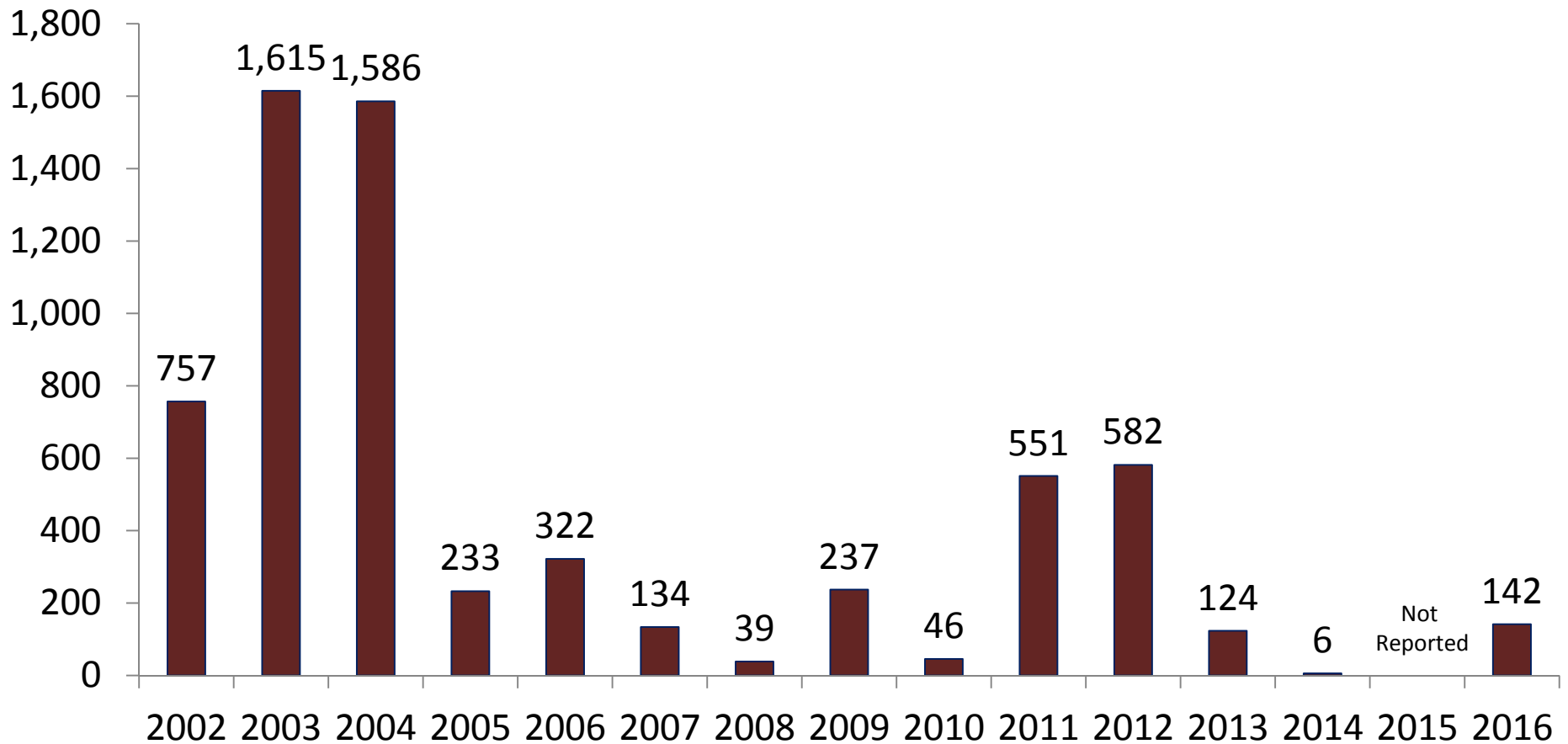


May average for the 2002-2015 period = 704,136 pounds

May Landings in Mississippi Were 70.4% Below Historical Averages



Mississippi Landings, May 2002-2016 (thousands of pounds, HLSO-weight)

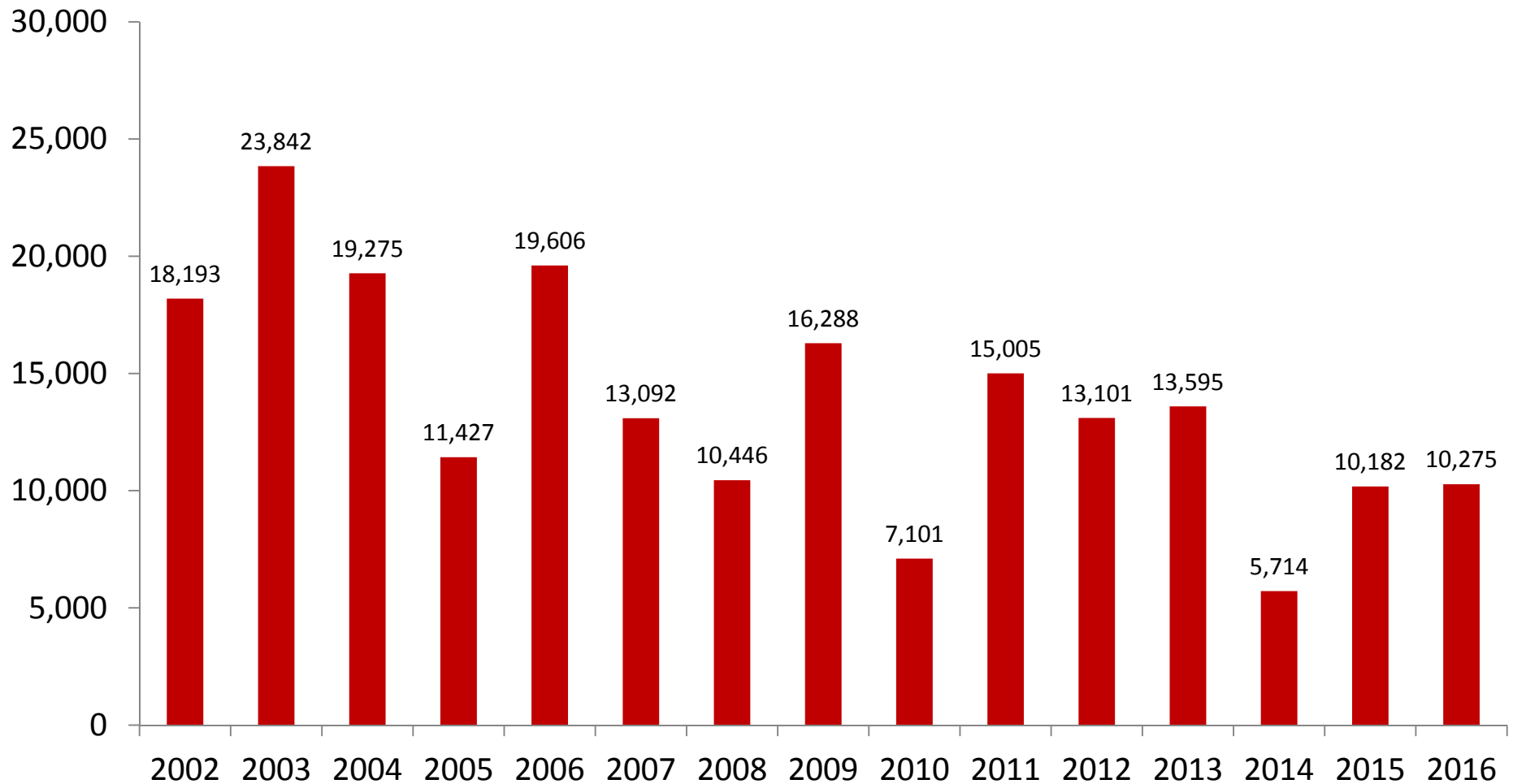


May average for the 2002-2015 period = 479,308 pounds

May Landings in the Gulf Were 26.9% Below Historical Averages



Gulf Landings, May 2002-2016 (thousands of pounds, HLSO-weight)

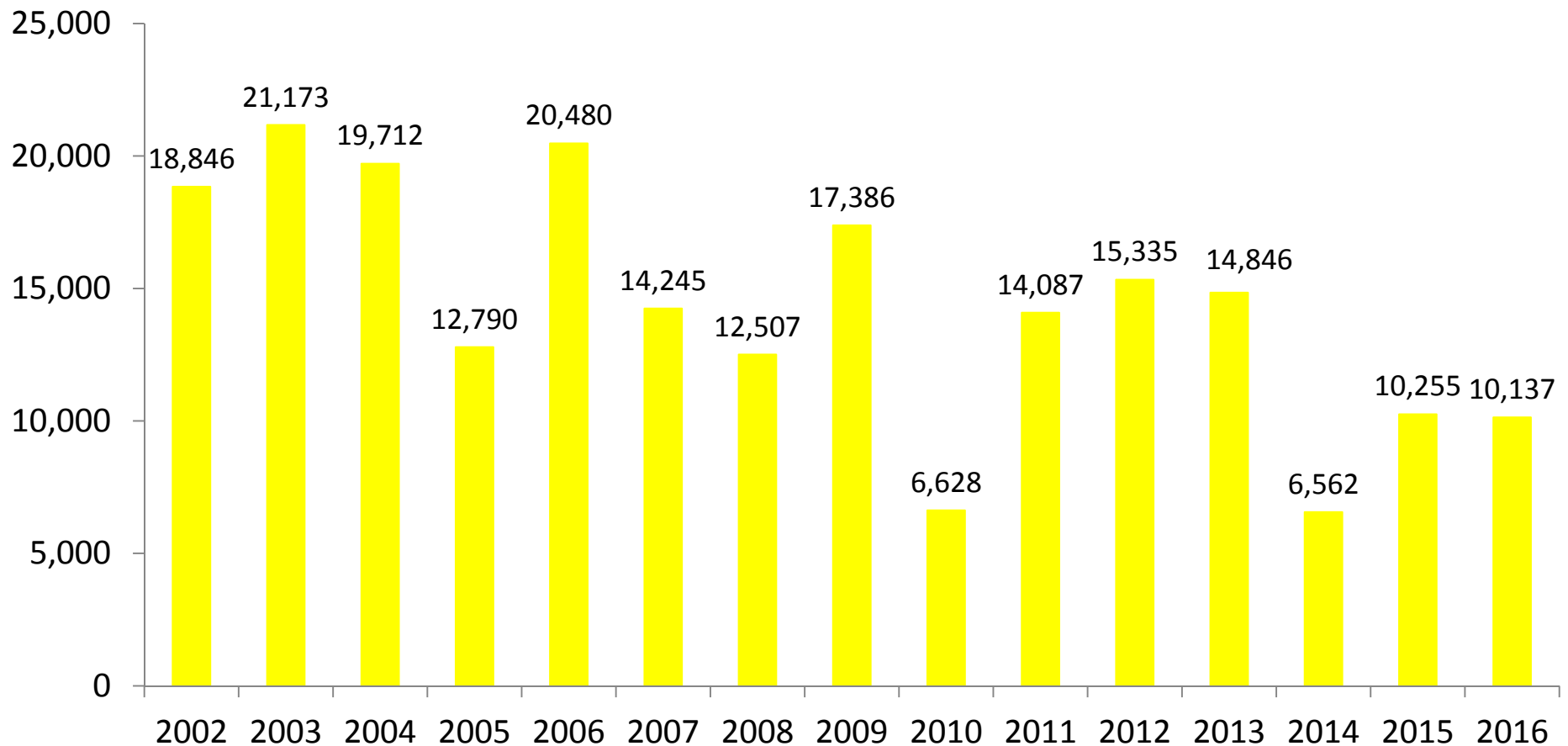


May average for the 2002-2015 period = 14,061,914 pounds

2016 Landings in Louisiana Are 30.7% Below Historical Averages



Louisiana Landings, January-May 2002-2016 (thousands of pounds, HLSO-weight)

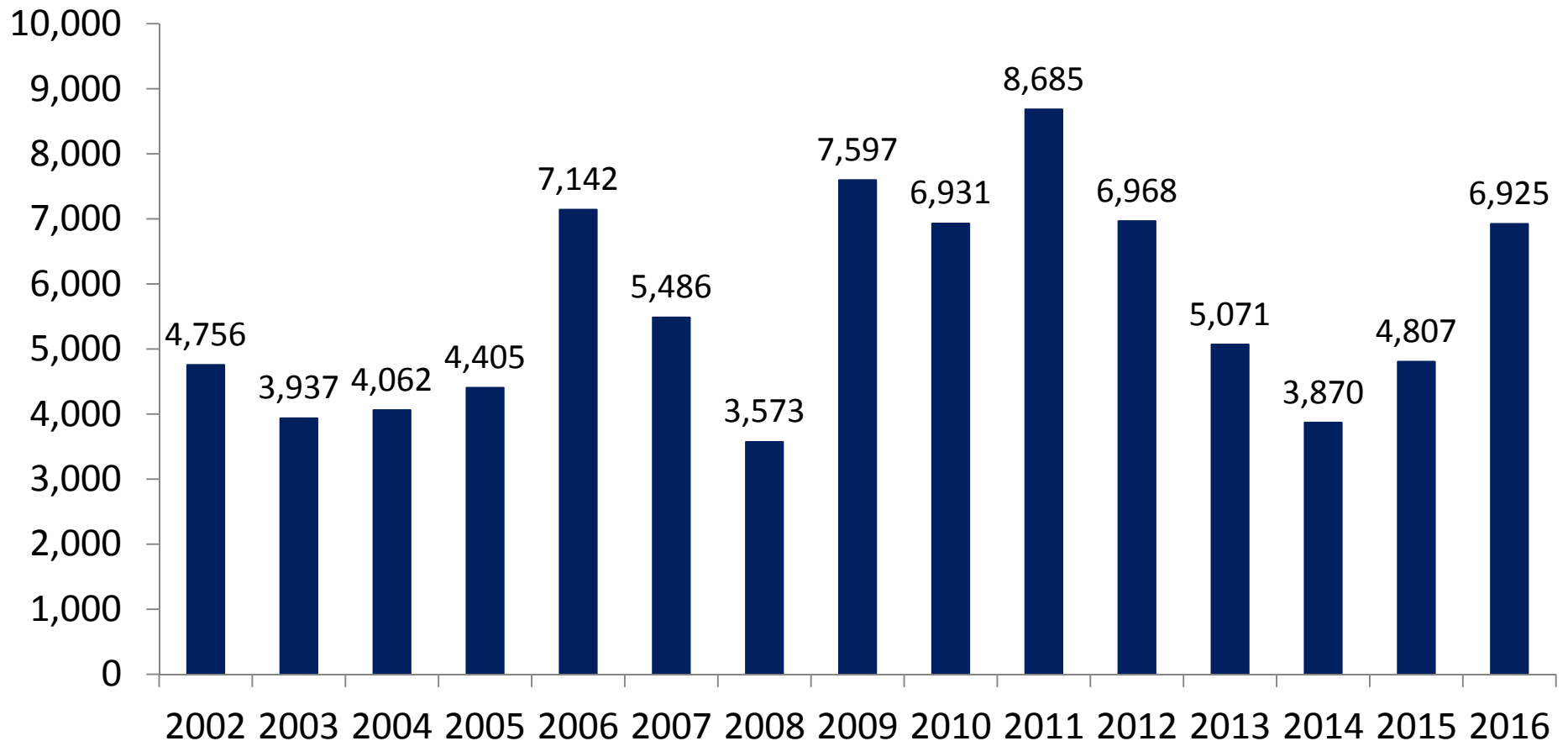


January-May average for the 2002-2015 period = 14,632,264 pounds

2016 Landings in Texas Are 25.4% Above Historical Averages



Texas Landings, January-May 2002-2016 (thousands of pounds, HLSO-weight)

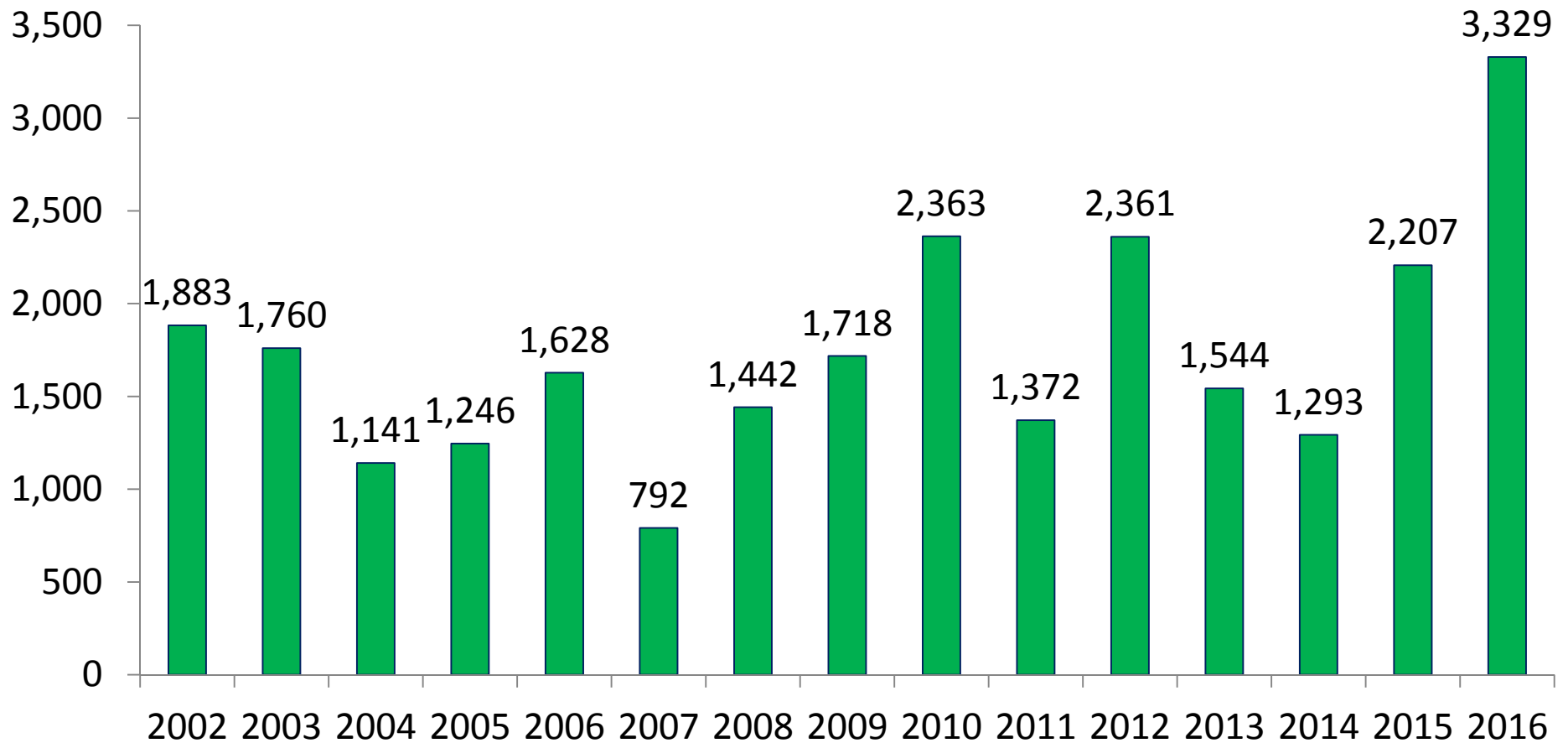


January-May average for the 2002-2015 period = 5,520,579 pounds

2016 Landings in Alabama Are 104.9% Above Historical Averages



Alabama Landings, January-May 2002-2016 (thousands of pounds, HLSO-weight)

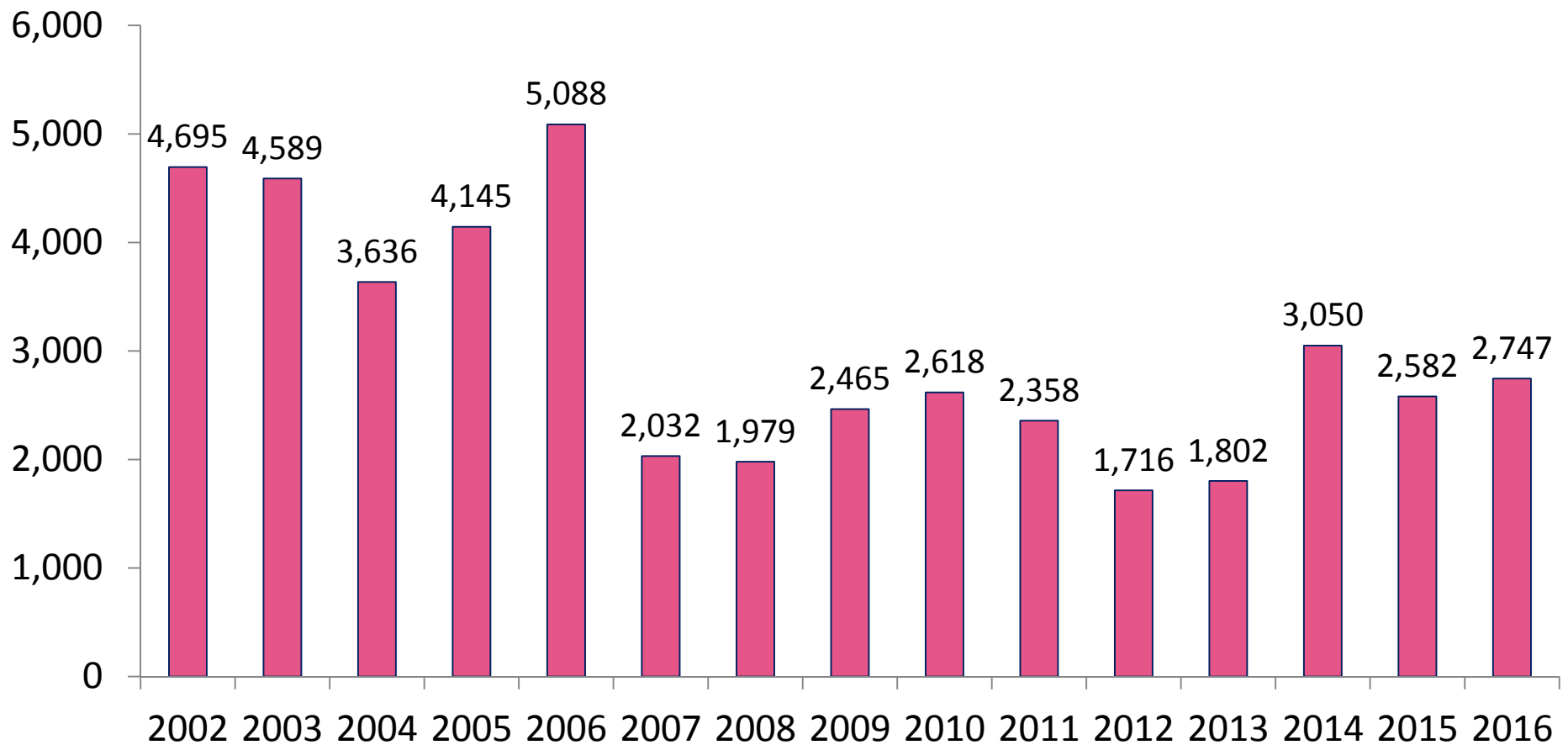


January-May average for the 2002-2015 period = 1,624,893 pounds

2016 Landings on the West Coast of Florida Are 10.1% Below Historical Averages



West Coast of Florida Landings, January-May 2002-2016 (thousands of pounds, HLSO-weight)

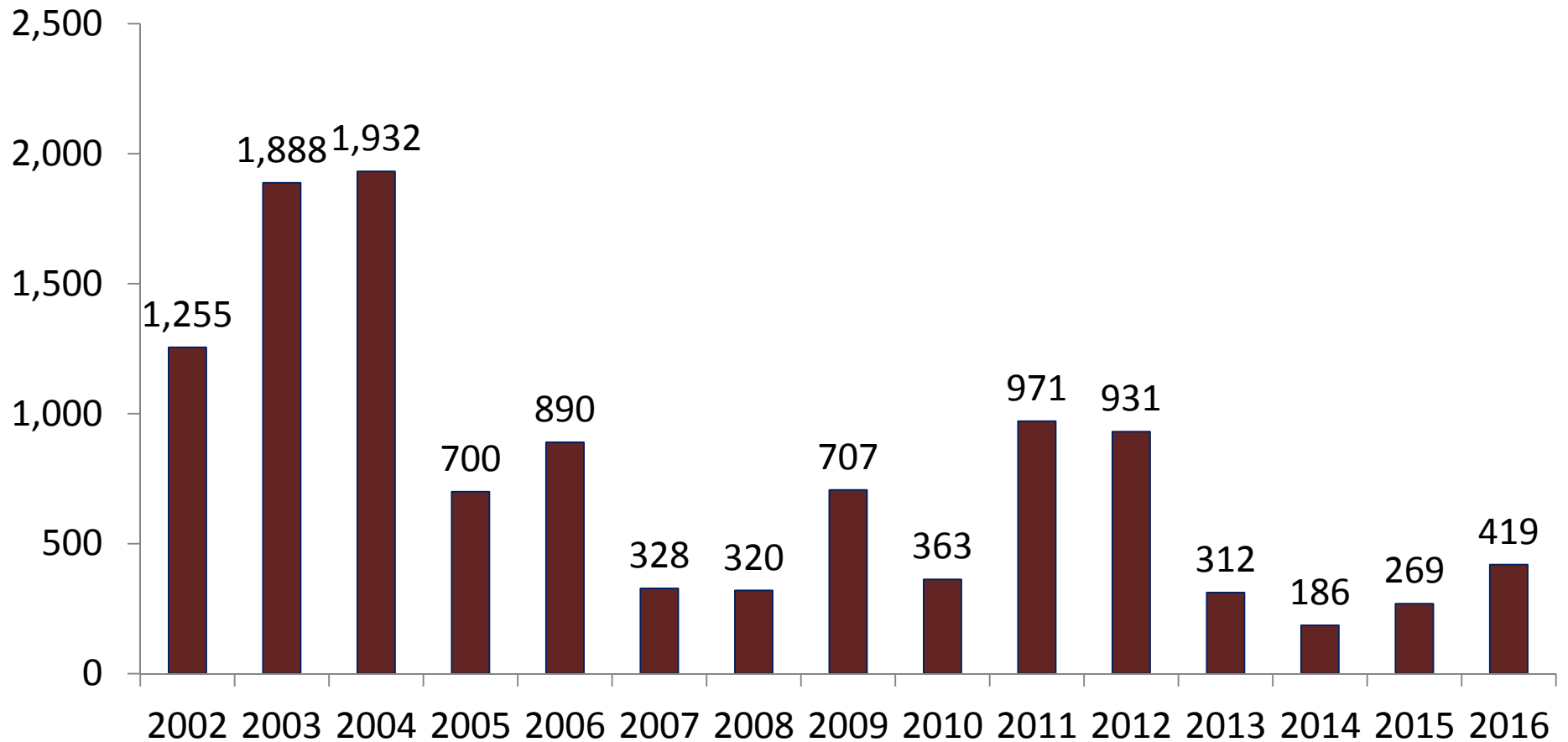


January-May average for the 2002-2015 period = 3,053,900 pounds

2016 Landings in Mississippi Are 46.9% Below Historical Averages



Mississippi Landings, January-May 2002-2016 (thousands of pounds, HLSO-weight)

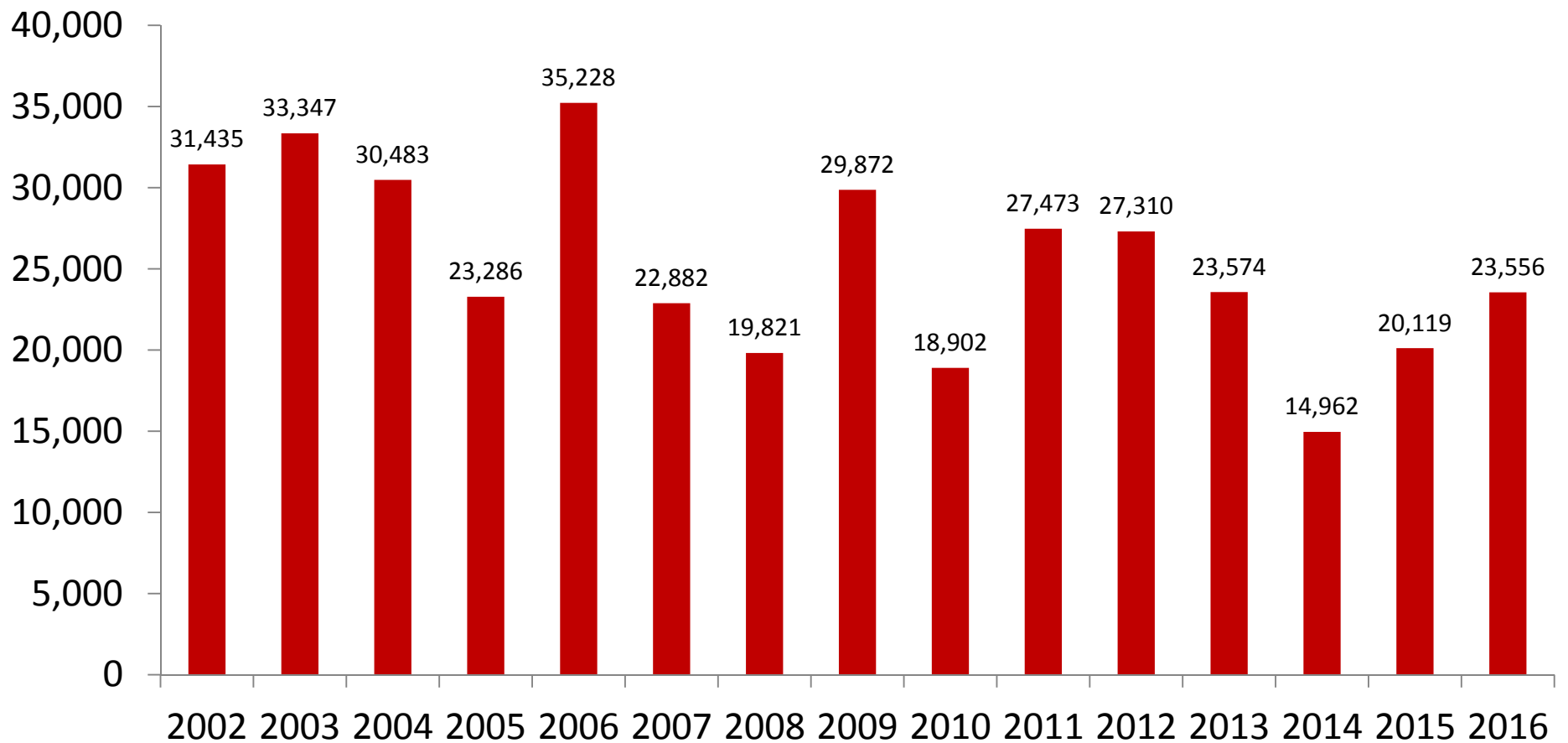


January-May average for the 2002-2015 period = 829,438 pounds

2016 Landings in the Gulf Are 8.6% Below Historical Averages



Gulf Landings, January-May 2002-2016 (thousands of pounds, HLSO-weight)



January-May average for the 2002-2015 period = 25,621,079 pounds

Landings in January-May Account for Between 11 and 30 Percent of the Total Louisiana Annual Harvest



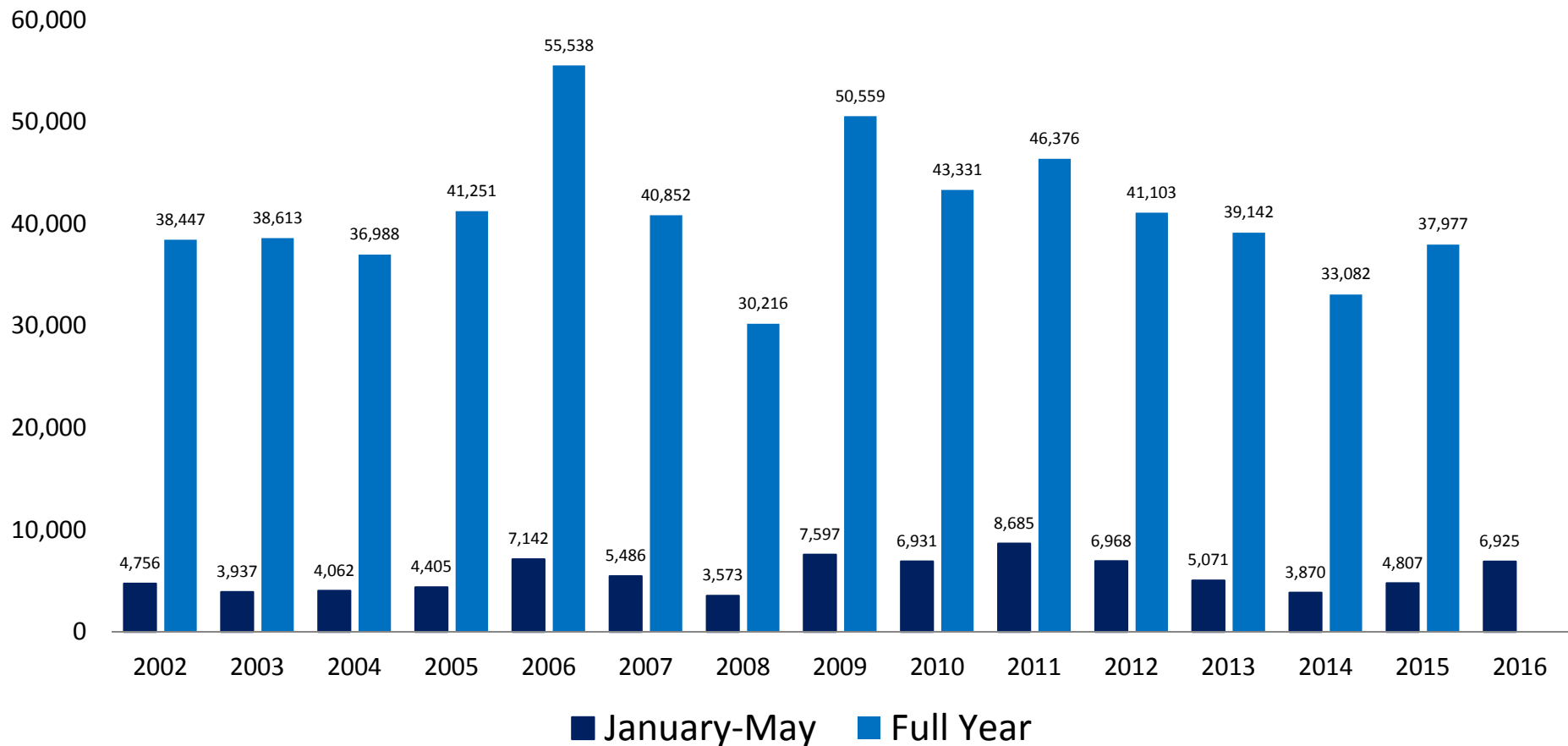
Louisiana Landings, 2002-2016 (thousands of pounds, HLSO-weight)



Landings in January-May Account for Between 10 and 19 Percent of the Total Texas Annual Harvest



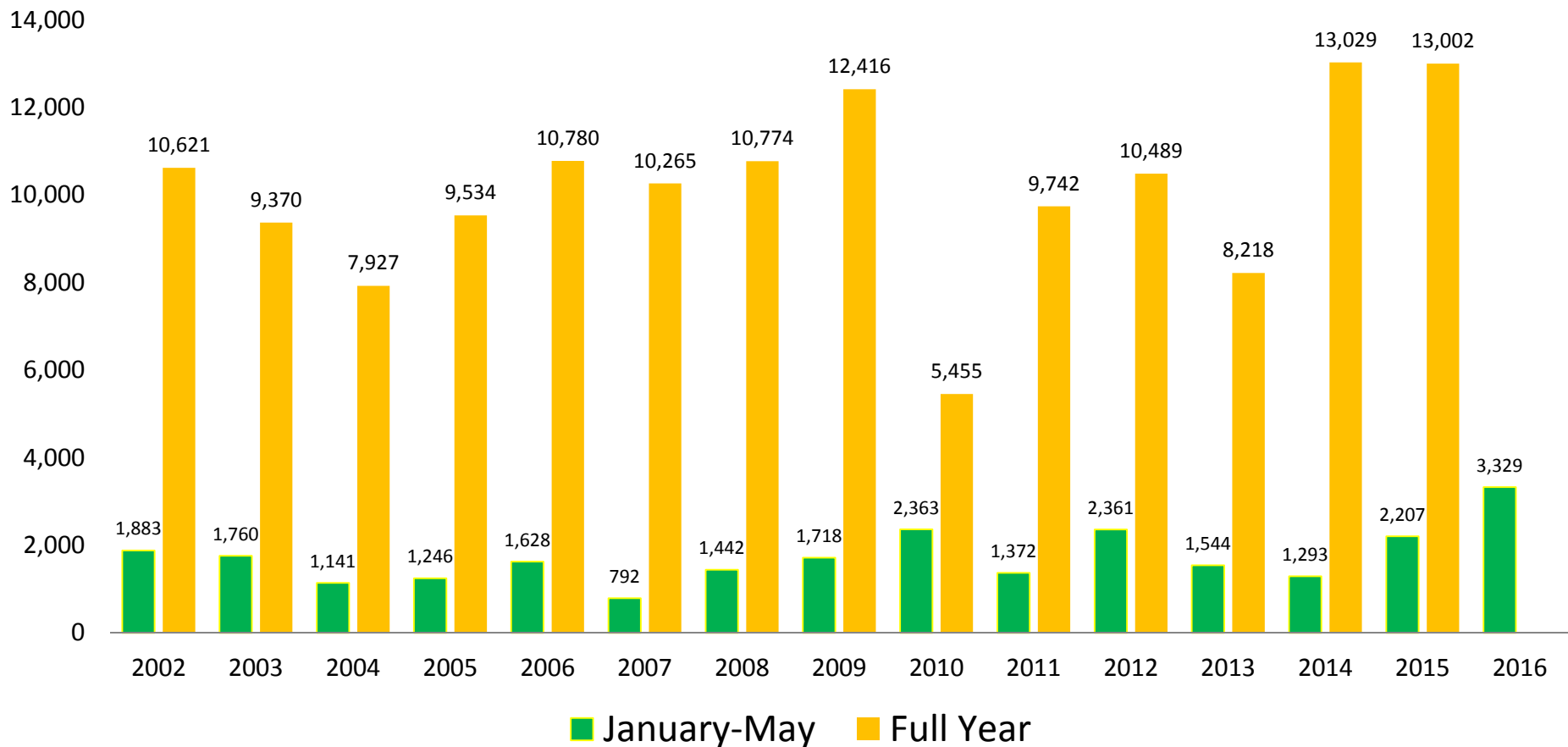
Texas Landings, 2002-2016 (thousands of pounds, HLSO-weight)



Landings in January-May Account for Between 8 and 43 Percent of the Total Alabama Annual Harvest



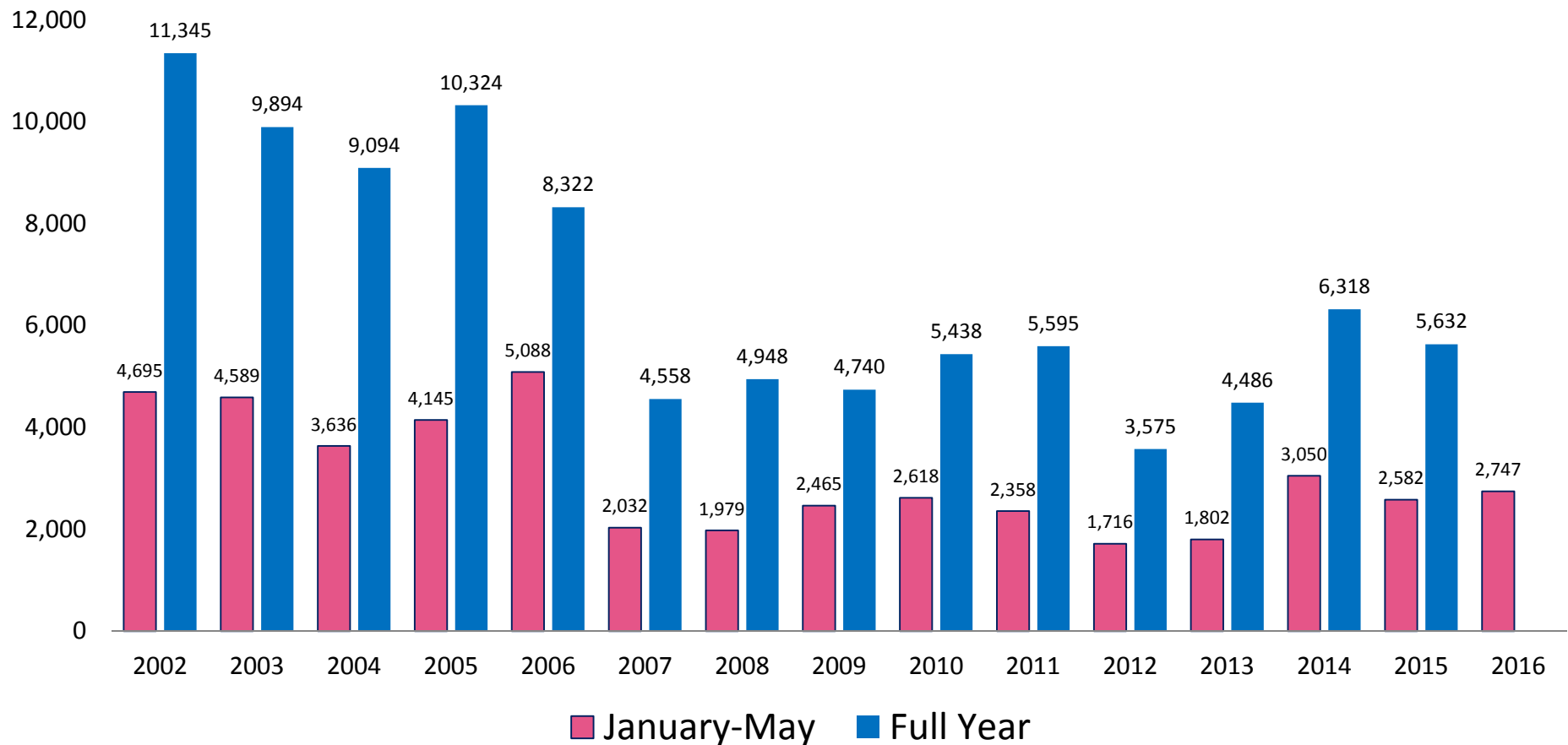
Alabama Landings, 2002-2016 (thousands of pounds, HLSO-weight)



Landings in January-May Account for Between 40 and 61 Percent of the Total Annual Harvest on the West Coast of Florida



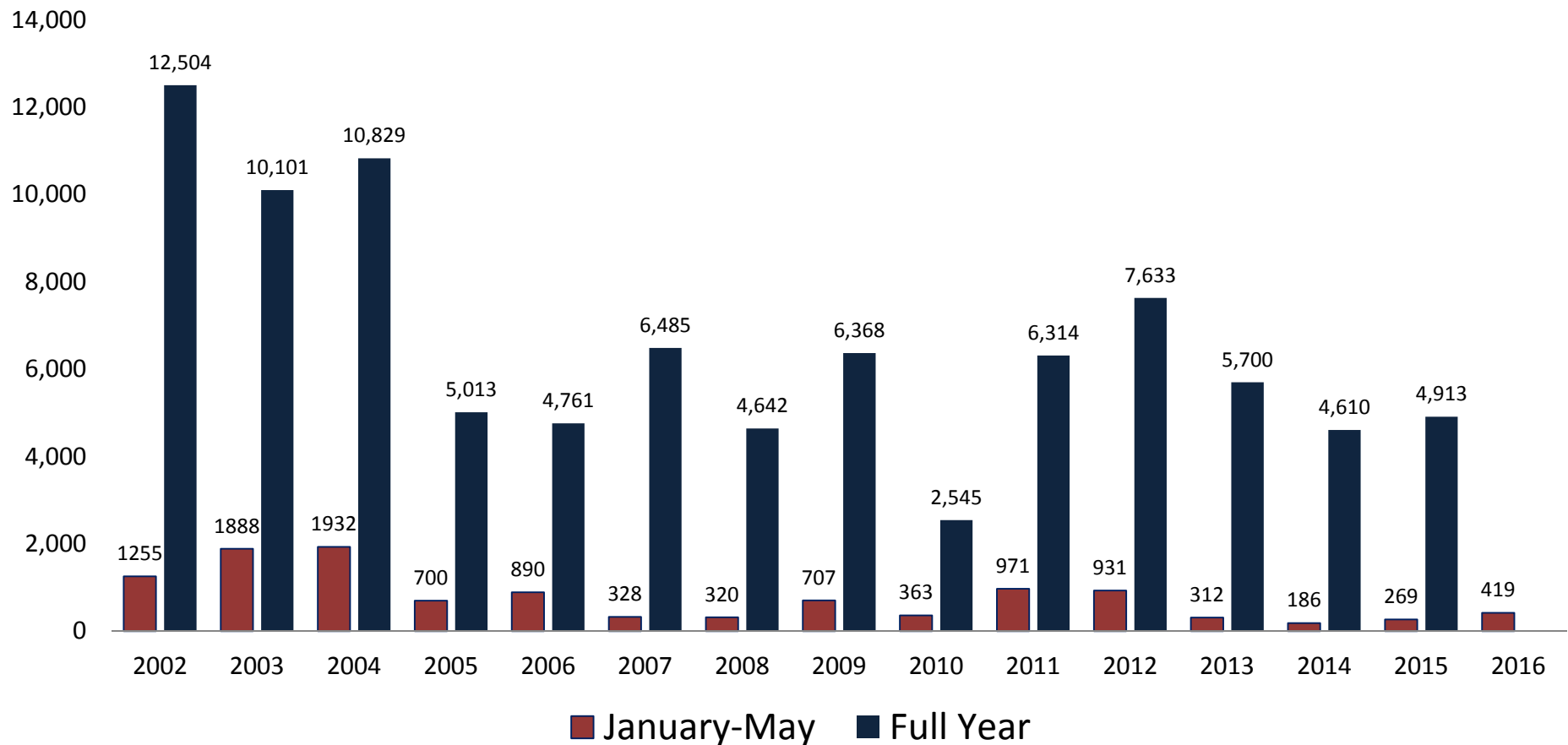
W.C. Florida Landings, 2002-2016 (thousands of pounds, HLSO-weight)



Landings in January-May Account for Between 4 and 19 Percent of the Total Annual Harvest in Mississippi



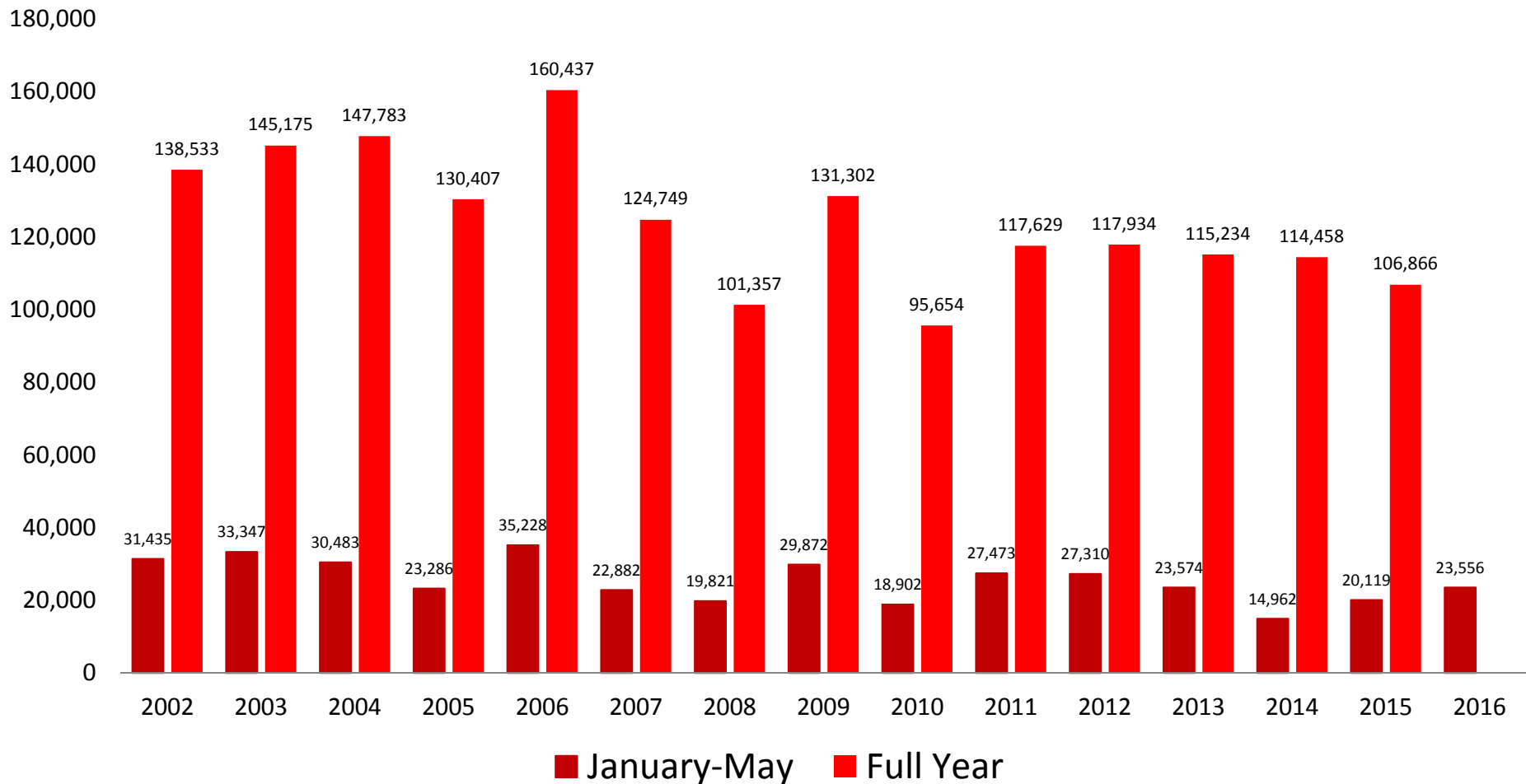
Mississippi Landings, 2002-2016 (thousands of pounds, HLSO-weight)



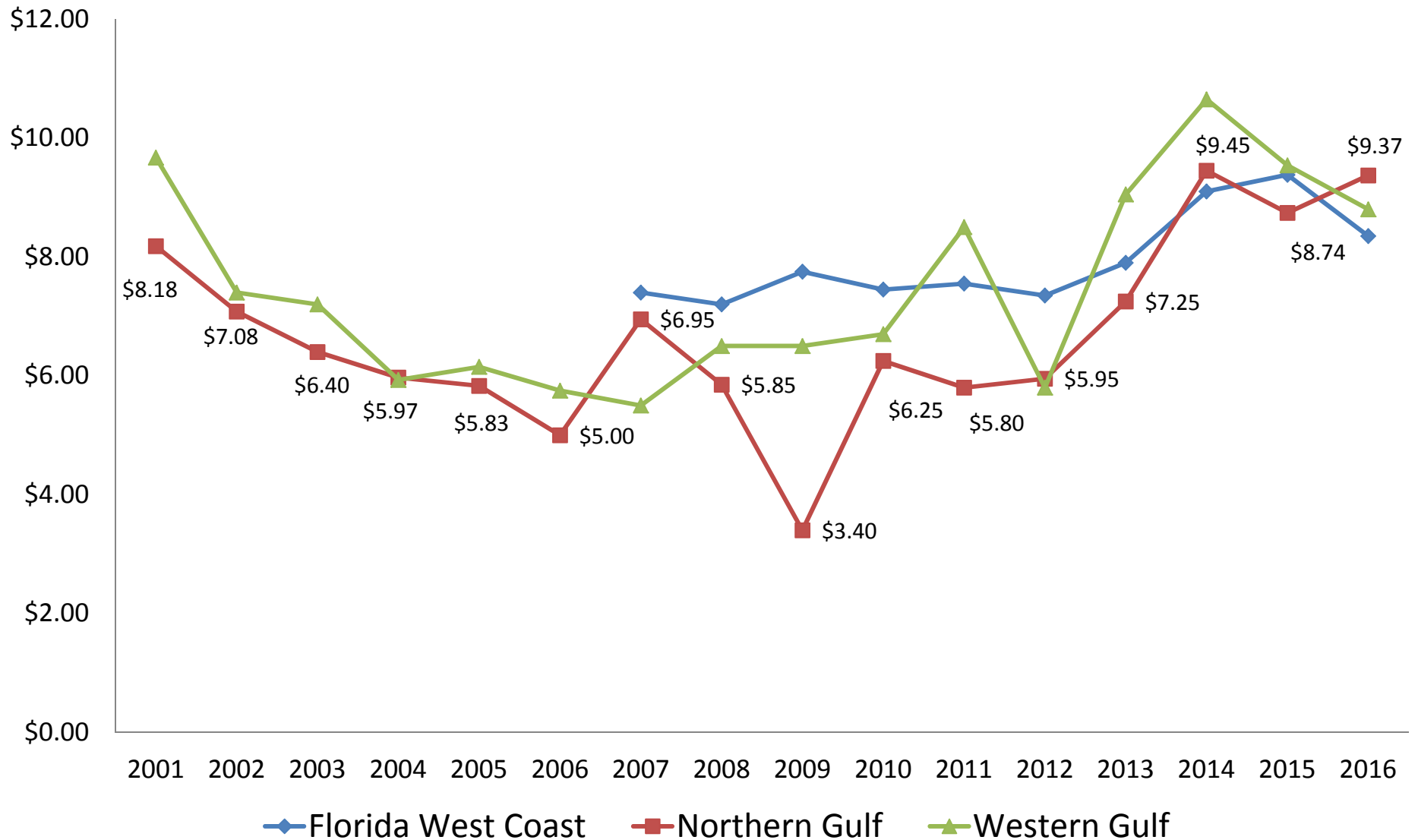
Landings in January-May Account for Between 13 and 23 Percent of the Total Gulf Annual Harvest



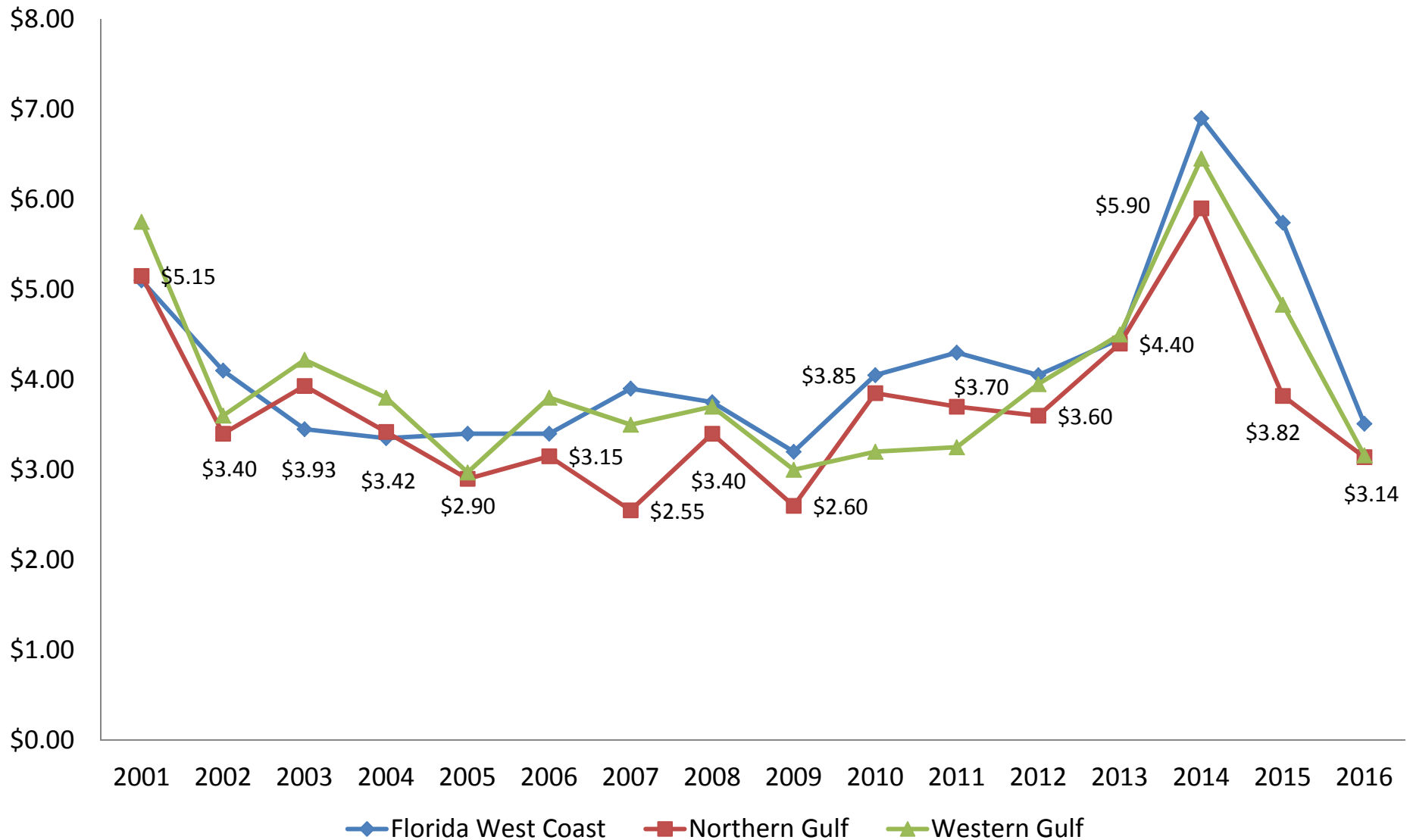
Gulf Landings, 2002-2016 (thousands of pounds, HLSO-weight)



May Ex-Vessel Prices 2001-2016 (U15)



May Ex-Vessel Prices 2001-2016 (26-30)



May Ex-Vessel Prices 2001-2016 (41-50)

